

Major alert for Loddon

From Page 1

The Pyramid Creek, which flows into the Loddon River at Kerang Weir, is not expected to reach 1981 levels, however weather and river flows will determine its level. Significant flows have been recorded on the Bullock Creek, which is rising.

The Loddon River downstream of Laanecoorie yesterday morning measured 2.48 m and was falling. It was 6.55 m and falling slowing at Loddon Weir at Fernihurst.

The river was steady at 2.97 m at Appin and was expected to rise quickly yesterday afternoon. At Kerang it measured 76.74 m and was expected to rise late today.

The Avoca River was 5.93 m and falling at Charlton, measuring 1.56 m and steady at Quambatook, where it was expected to rise significantly yesterday afternoon.

The Murray River was expected to peak at 94.5 m at Echuca yesterday afternoon. It measured 94.47 yesterday morning.



Soggy September

KERANG is on target to record its wettest September on record.

With 103.4 mm already falling during September, the town needs another 7.5 mm before the end of the month to rewrite history.

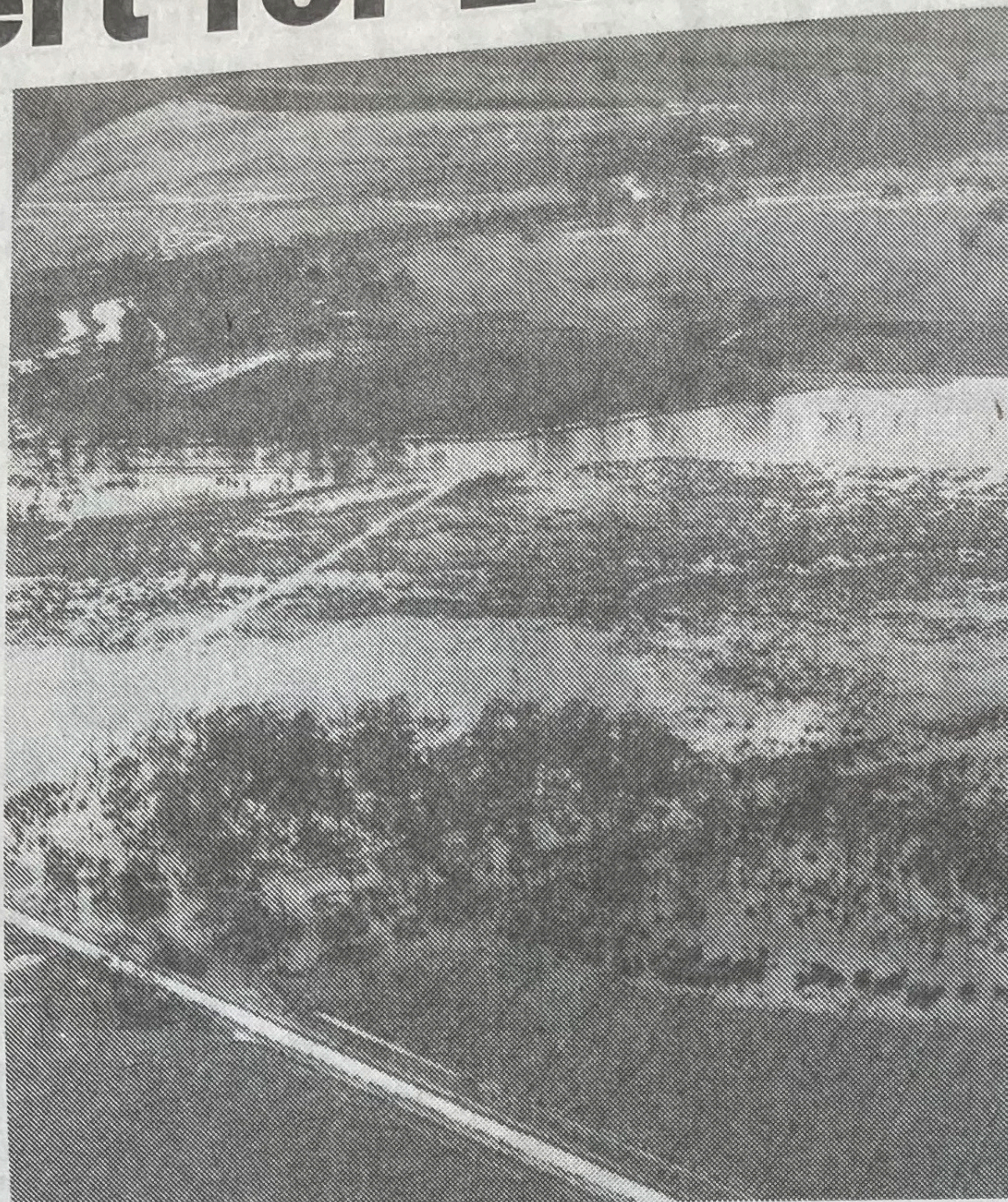
With a week still remaining before the end of the month, Kerang has already recorded its second wettest September on record.

The wettest September ever came just last year when 110.8 mm fell.

That was during a year which saw Kerang record its second wettest Spring with 233.4 mm and third wettest year, with 689.4 mm.

Kerang's average monthly rainfall for September is a paltry 35 mm, with the Spring average standing at 91 mm.

So far this year 317.8 mm of rain has fallen in Kerang.



The swollen Loddon River near Kerang. Picture: WALLY GROTE.

Moderate flooding for Murray River

By GREY MORRIS

THE Murray River at Barham is expected to reach a moderate flood level of between 5.9 and six metres later this month.

The expected flood level has meant moderate flood warnings to areas upstream and downstream of Barham township, including the Koondrook State Forest upstream of the town and downstream areas such as Mellool and Murray Downs.

Victorian areas to be affected by the high levels include the Gunbower Island State Forest, Gutterum State

Forest and the Myall and Murrabit regions.

State Emergency Service controller for the Shire of Wakool, Mr Neil Whelan, said Barham township was protected by about 3 km of levees constructed at 600 mm above the level of the 1956 floods.

Landholders to the north of Barham have been advised by police to move their stock and heavy machinery to higher ground as creeks in the region become flooded.

Mr Whelan said the warning covered landholders within a radius of between 20 and 30 km

from Barham.

He said the town's water supply, treated with chlorine on a regular basis, was not expected to be affected any more than is usually the case when river levels are high. Barham residents will be the recipients of filtered water at the end of this year when the new water treatment plant begins operation.

He said a significant rise in the level of the lower reaches of the Loddon River by the end of the month would increase flood levels at Mellool and Murray Downs.



Mr John Robertson, left, and Mr Dennis Greenwood inspect their tow truck after it was cleared for use this week.

Towing service operating

A 10-month battle by two Kerang firms for the right to operate a towing service ended this week when their

refurbished tow truck was registered by VicRoads.

Kerang Towing is operated by car dealer, Arnoldt and Greenwood Pty Ltd and motor body repairer, J.P. Robertson and Sons Pty Ltd, who gained widespread public support when they appealed against the refusal of VicRoads to issue a licence.

Local businesses, both local councils and emergency services supported their appeal, arguing that the community should have the right to operate such a service

despite objections from tow truck operators at Cohuna and Swan Hill.

Mr Greenwood said that both firms were delighted that their battle was over and expressed appreciation for the support of the community.

His firm is the local Royal Automobile Club of Victoria service agent and Robertsons are RACV-approved repairers.

Kerang Towing can be contacted by telephoning 52 1244 or 52 1243 or after hours 52 2032, 52 2042 or RACV 52 2191.

DUTY CHEMIST

Allan McCasker

Open

Sunday 11-12 noon

After hours 52-1919

or 018 500567

McCaskers

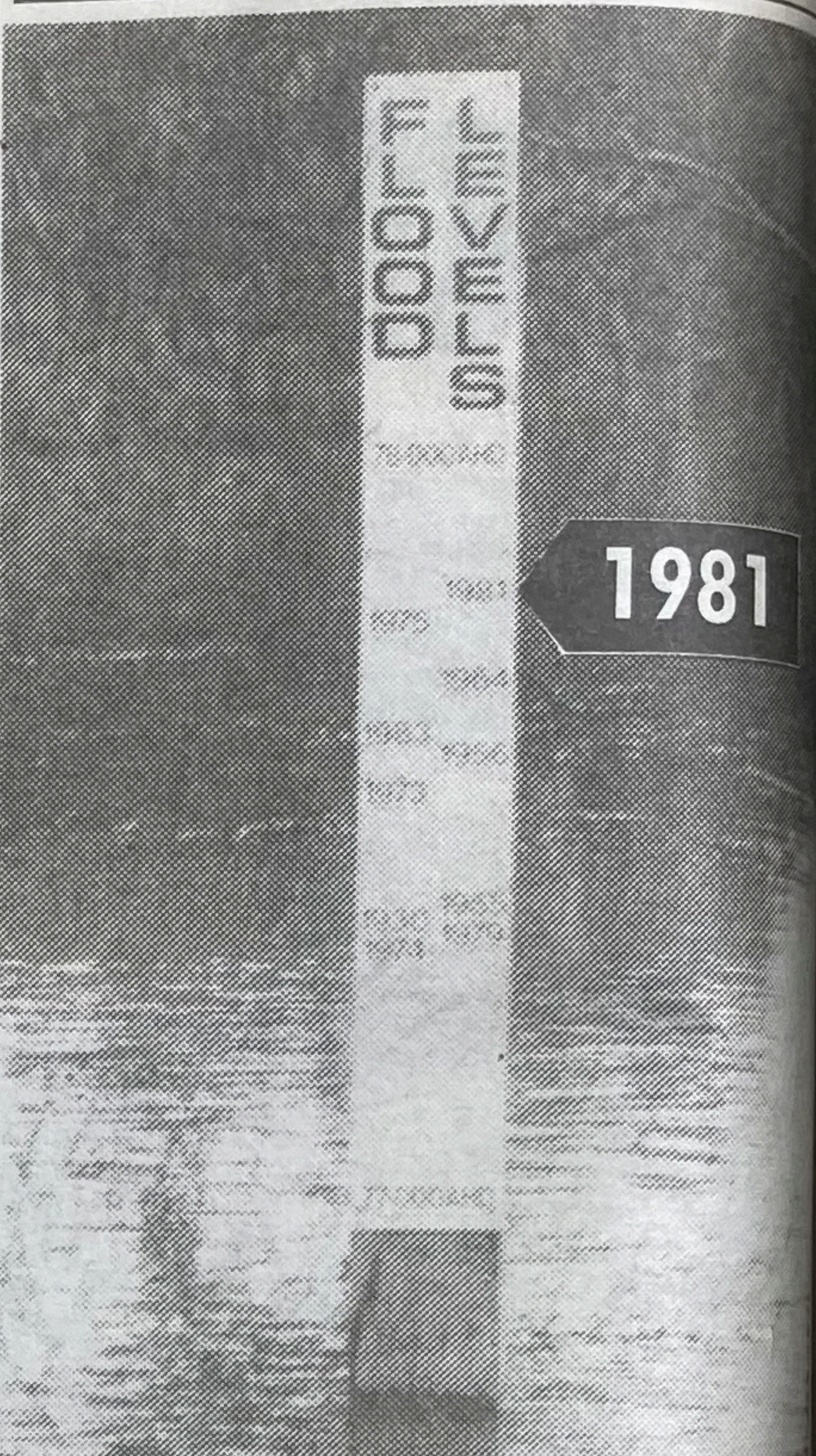
Amcal Pharmacy

CURRENT FLOOD CLASS LEVELS

LODDON RIVER CATCHMENT

	Minor	Moderate	Major
Laanecoorie Reservoir	1.5m	5.0m	5.5m
Loddon River at Serpentine Weir	0.75m	4.6m	4.8m
Loddon River at Loddon Weir	3.3m	6.0m	7.0m
Loddon River at Appin South	2.8m	3.10m	3.3m
Loddon River at Kerang	77.0m	77.30m	77.60m

What to expect



The flood level marker downstream of the Murray Valley Highway bridges at Kerang shows past major flood heights. The peak due on Monday is expected to be close to the record 1981 level.

MARTINS DIESEL FUEL INJECTION

Authorised

Lister Diesel Engine

Sales & Service

Phone 52-2301

A.H. Darren 50-3046, Kevin 54-6202

MARTIN'S NUPRO STEEL

Murray Valley Highway, Kerang

Phone/fax 52-1055

SPECIAL

Duragal Tube

Square and rectangular

* E.G. 2" x 2" x 14 gauge \$40 per 8 metre length

GLASS FOR

Windows - Shower Screens
- Doors - Tractor Cabins
Mirrors made & cut to size

Alumak Industries

1 Tate Drive, Kerang
(Opposite Wilga Park Nursery)

PH: (054) 52-2919

Dahlgens BUILDING CENTRES
ESTABLISHED 1977
SWAN HILL
Karinie Street
32-9322

KERANG
Boort Road
(054) 52-2188

Suppliers of:-

- Prefabricated wall frames and trusses
- Canadian oregon
- Treated pine
- Particle board
- Random grooved ply
- Reinforcing mesh
- Gyprock plaster-board
- Doors
- All Hardies products
- Vanity units
- Laminex products
- Spa baths
- Custom designed kitchens
- Power tools
- Cement
- Boral bricks
- Pavers
- Shadecloth
- Roofing iron

Kerang Fruit & Vege Mart

This week's specials or until stocks run out

Sidewalk Specials

- 5 kg Brushed Potatoes \$1.49 bag
- 4 kg bag Granny Smith Apples \$1.99
- Rhubarb 99c bunch
- Celery 75c bunch

HOME DELIVERY

Phone orders 52 1870

27 Scoresby street, Kerang

